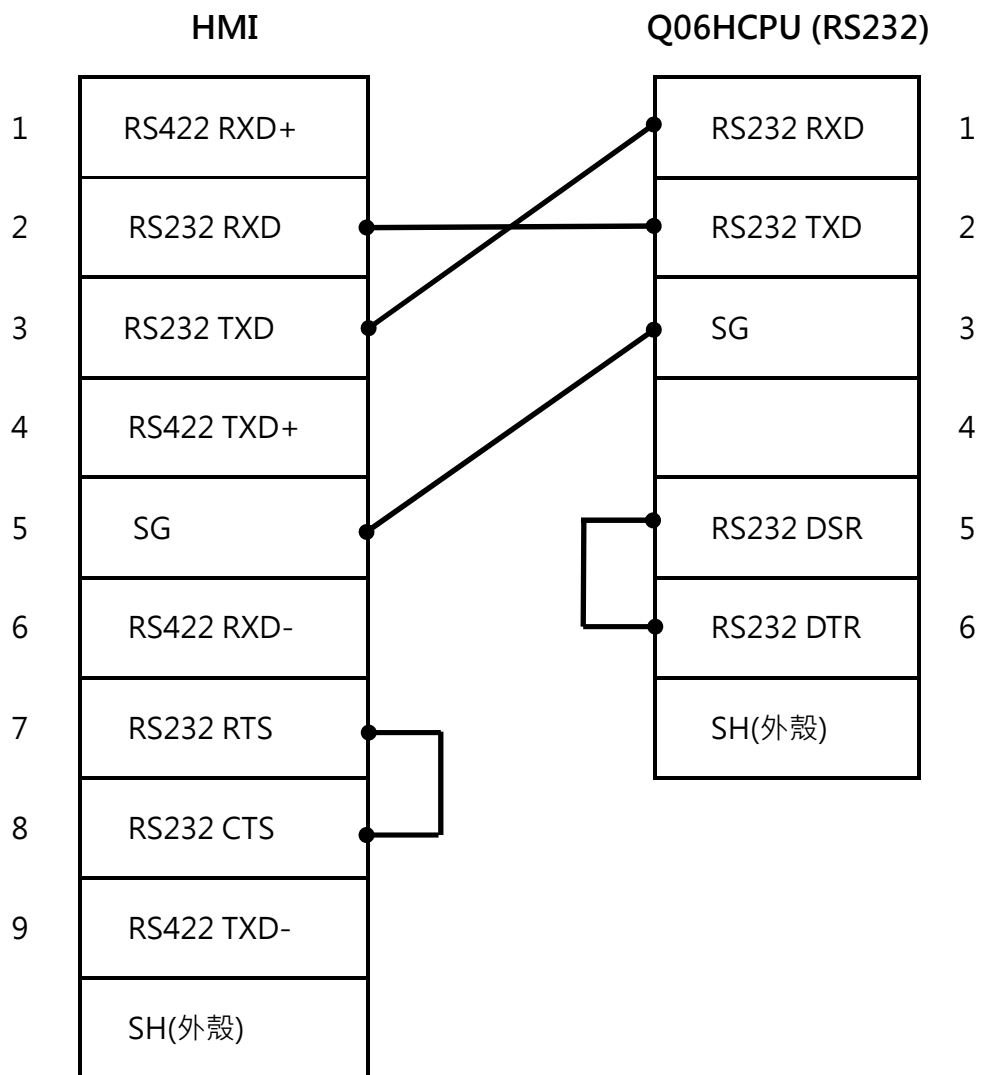
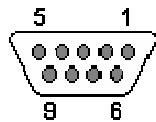


MITSUBISHI Q06HCPU RS232 接線圖



DB9(母)接頭

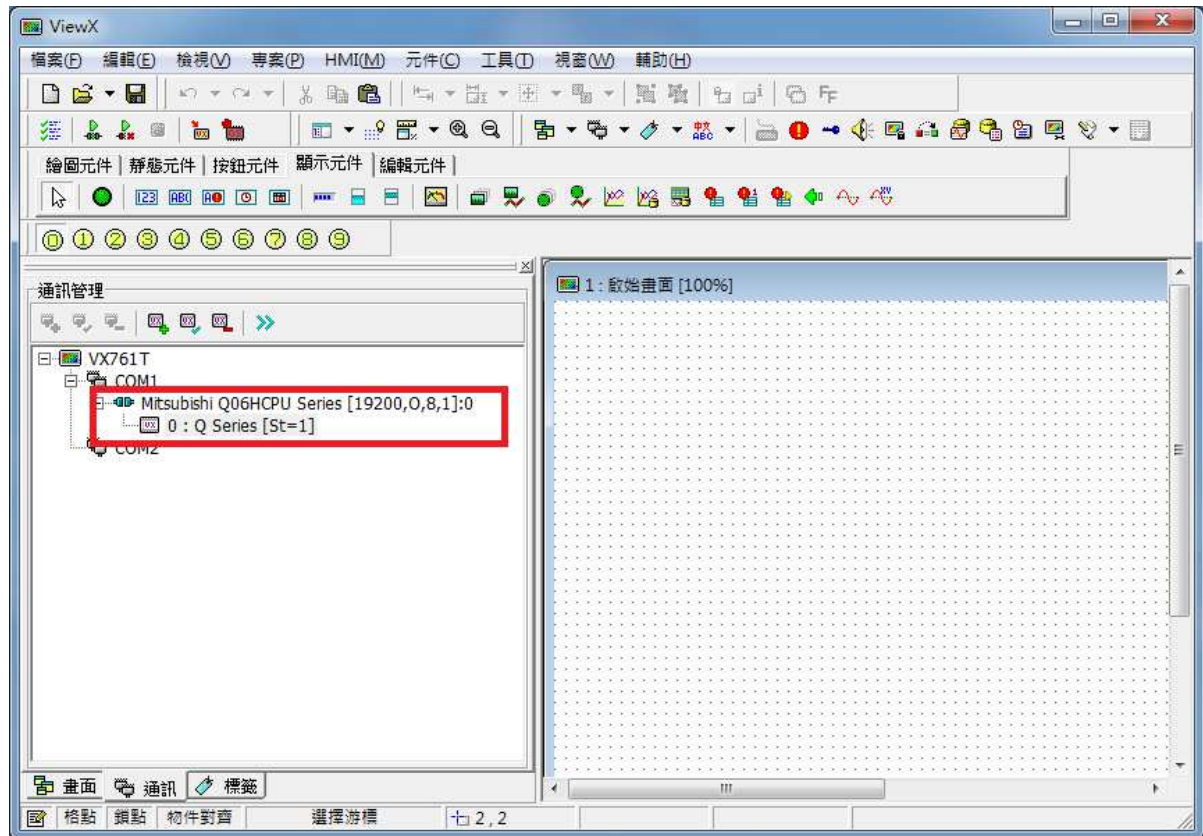


Mini-DIN 6Pin Male 接頭



註:VX301 /VX360T 連接時,只能使用 COM1(RS232).

HMI 規劃軟體注意事項



1. 通訊協定選擇 " Mitsubishi Q06HCPU Series"
2. 通訊參數 19200,奇同位,8 資料位元,1 停止位元.
3. PLC 裝置選 "Q Series", 站號設定為 1.